

CATONE LIVE CENSORSHIP & AD INSERTION



KEY

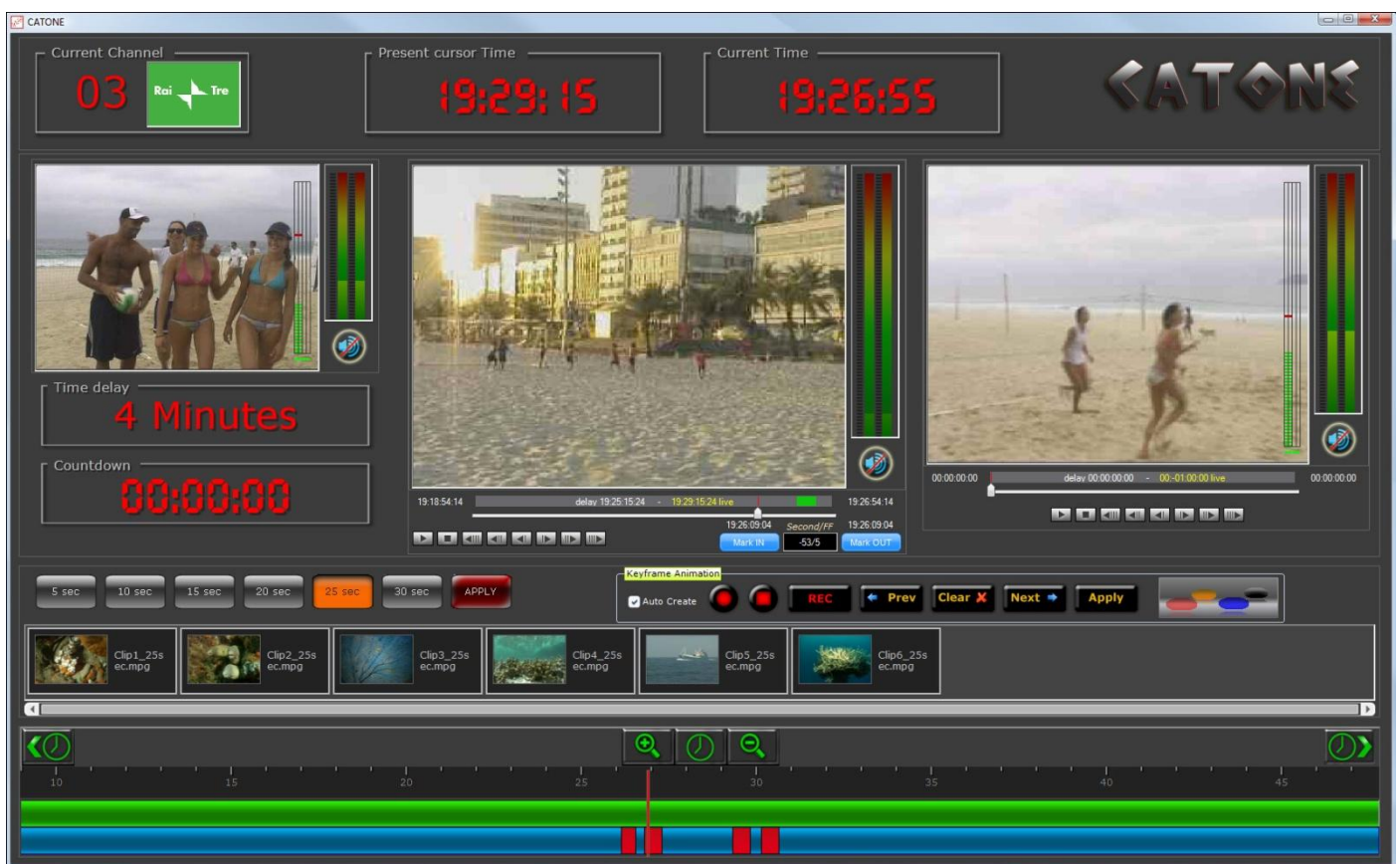
CATONE is live censorship application for re-broadcasting channels or live productions. It includes unique features as well as AD Insertion System

April 2010

Catone is a Live Censorship System able to scale from few channels up to hundreds. It can be integrated with a powerful production system that includes a Media Asset Management, for off-line censorship, and AD Insertion for local scheduling off breaks and promos.

Some the features include:

- 🎬 Live, Censoring and Preview video monitor
- 🎬 Audio monitoring with level meters
- 🎬 Muting, beep
- 🎬 Overlay graphics, different shapes, transparency and automatic insertion frame by frame
- 🎬 Pass through
- 🎬 Video footage library for cut and insertion
- 🎬 Count down timer with alarm
- 🎬 Programmable time delay
- 🎬 Dual time line: censored and scheduled time line
- 🎬 Scroll button time line with zoom up to 2 hours
- 🎬 Support for SD/HD
- 🎬 Integrated AD Insertion



The CATONE GUI provides the censorship operator with all the facilities required to remove offensive video and replace it with pre-recorded footage or cover part of the image with graphics of different shape, color and transparency in addition to the capability to mute or beep offensive audio.

The interface contains the following elements:

- Channel Number
- Channel Name & Logo
- On Air Time, the time for the scheduled programs to go on air.
- Current Time, is the current real time.
- Time Delay, it is the delay set for the video feed before it goes on air. It is set using the + and – buttons.
- Count down Timer with Alarm, it provides a clear indication for the time left to go on air with a preset alarm providing a warning as the on air time is approached.
- On Air Display, shows what is actually on air currently.
- Preview Player, shows what is to go on air after censorship. It has the normal controls of a player such Play, Stop, Pause, Rewind and Fast Forward.
- Live Feed Player with Censorship Controls. This is the main player where the censorship operator does most of the work. The player has in addition to the normal controls, other controls such as mark-in, mark-out, voice mute, graphic shapes to cover parts of the video frame when required, with adjustable size, transparency and variable colours. This is besides a Pass-through button if the monitored video is safe and requires not censorship such as sports competitions and matches.
- Dual Vu Meters for each video window, with mute buttons.
- Video Footage Library with Scroll Bar and Duration Selection Buttons/Tabs. There are 6 selection buttons/tabs covering different video clip durations; 5 sec, 10 sec, 15 sec, 20 sec, 25 sec and 30 sec. The video clips could be viewed sequentially by a horizontal scroll bar.
- Censorship Buttons, including; graphical shapes (circle, square and triangle) as well as voice mute.
- Pass-through Button.
- Mark-In, Mark- Out Buttons with Time Code Displays. These are used to specify where cuts are applied or the replacement video clip is inserted onto the received program.
- Time Lines; One for Live Feed (Input video) and the other for Transmission (Output Video). Each with a cursor (the cursor for the incoming feed is blue coloured while for the output video is red coloured). The cursors indicate the time of the censor and the time the program goes on air, respectively.



Ad Insertion Scheduler Video Server

Media Alliance Ad Insertion 09.34.34

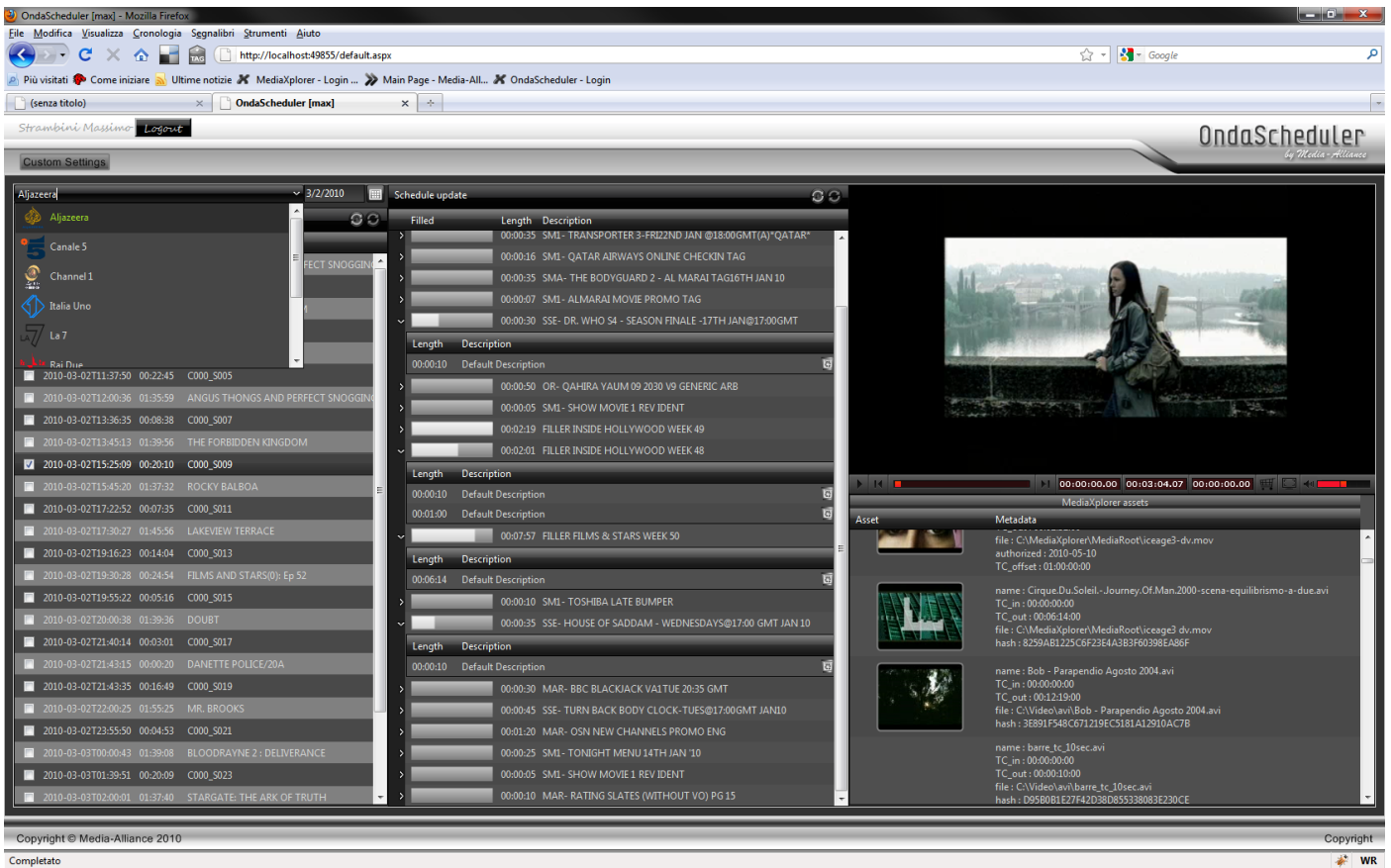
Scheduling of the day: 12 mar 2010

Next slot at: 10.02.48

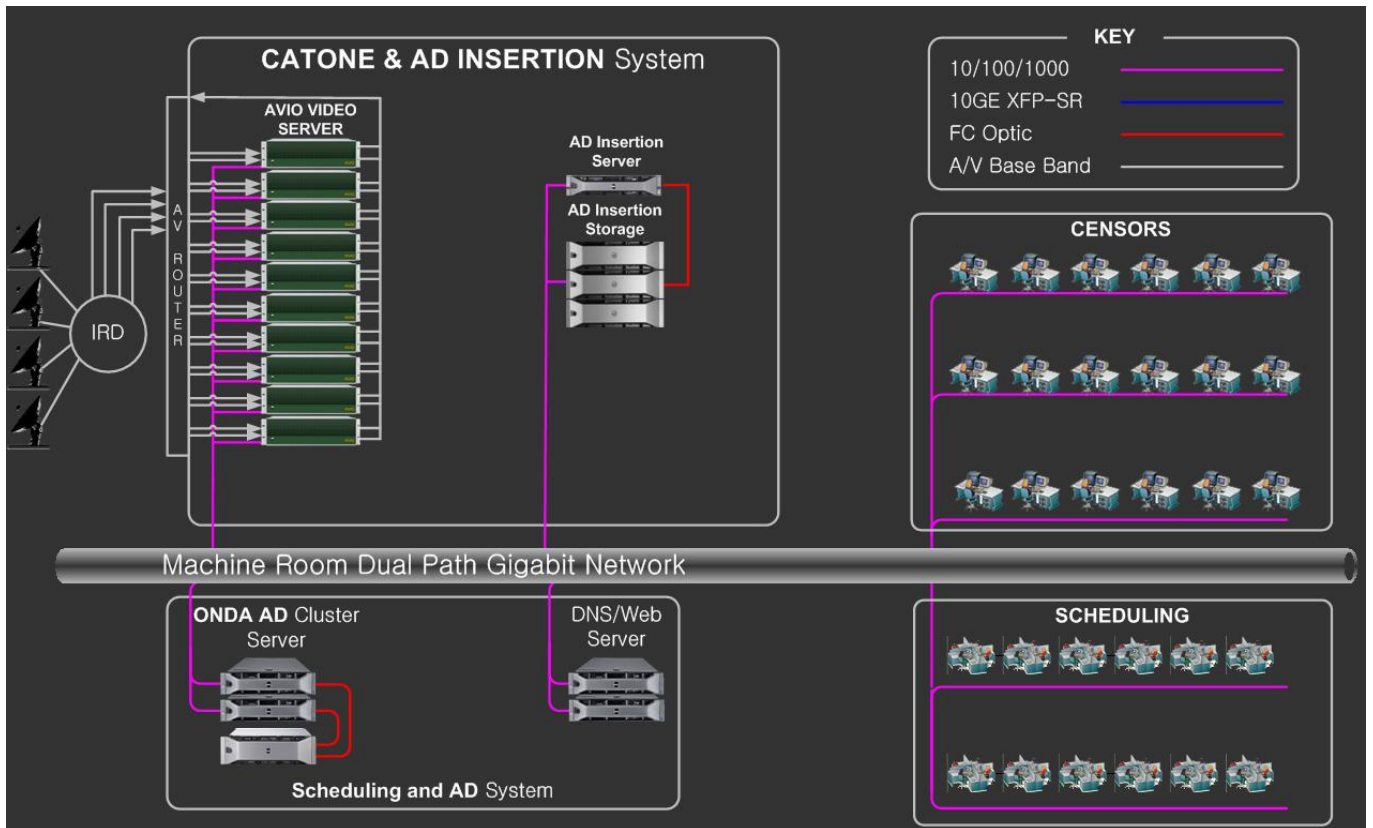
slot	countdown	time	clip	status	length	end time
		07.09.43.184	T:\Assets\HQ\10002806.mpg		00:04:52:02	07.14.35.279
		07.14.35.279	T:\Assets\HQ\10002499.mpg		00:02:32:08	07.17.07.620
		07.17.07.620	T:\Assets\HQ\1000256.mpg		00:04:26:19	07.21.34.398
		07.21.34.398	T:\Assets\HQ\10002895.mpg		00:01:15:08	07.22.49.722
		08.00.37.000	T:\Assets\HQ\10002631.mpg		00:04:54:02	08.05.31.099
		08.05.31.099	T:\Assets\HQ\10002484.mpg		00:02:25:00	08.07.56.120
		08.07.56.120	T:\Assets\HQ\10002880.mpg		00:01:05:02	08.09.01.283
		08.09.01.283	T:\Assets\HQ\10002720.mpg		00:00:30:07	08.09.31.516
		08.09.31.516	T:\Assets\HQ\10002389.mpg		00:02:54:16	08.12.26.176
		09.05.34.000	T:\Assets\HQ\1000232.mpg		00:03:55:09	09.09.29.360
		09.09.29.360	T:\Assets\HQ\10002112.mpg		00:01:47:21	09.11.17.226
		09.11.17.226	T:\Assets\HQ\10002153.mpg		00:04:33:19	09.15.50.992
		09.15.50.992	T:\Assets\HQ\100025.mpg		00:03:48:00	09.19.39.012
		09.19.39.012	T:\Assets\HQ\10002965.mpg		00:01:36:23	09.21.15.940
	00:01:00:00	10.02.48.000	T:\Assets\HQ\10002181.mpg	next	00:04:30:10	10.07.18.411
		10.07.18.411	T:\Assets\HQ\10002224.mpg	next	00:01:00:06	10.08.18.681
		10.08.18.681	T:\Assets\HQ\10002460.mpg	next	00:00:56:17	10.09.15.383
		10.09.15.383	T:\Assets\HQ\10002268.mpg	next	00:04:14:03	10.13.29.505
		10.13.29.505	T:\Assets\HQ\10002393.mpg	next	00:00:37:10	10.14.06.994
		11.09.30.000	T:\Assets\HQ\10002792.mpg	to play	00:03:34:20	11.13.04.816
		11.13.04.816	T:\Assets\HQ\10002425.mpg	to play	00:01:12:19	11.14.17.375
		11.14.17.375	T:\Assets\HQ\10002109.mpg	to play	00:03:23:17	11.17.41.058
		11.17.41.058	T:\Assets\HQ\10002167.mpg	to play	00:00:39:07	11.18.20.365
		11.18.20.365	T:\Assets\HQ\10002388.mpg	to play	00:04:33:15	11.22.53.979
		12.09.31.000	T:\Assets\HQ\10002358.mpg	to play	00:01:14:11	12.10.45.471
		12.10.45.471	T:\Assets\HQ\10002217.mpg	in play	00:03:26:04	12.14.11.644

Ready Video Server: Onda Scheduler:

As an option, CATONE includes also AD INSERTION System, based on ONDA Automation and denominated ONDA AD. ONDA AD offers a scheduling application to manage scheduling of clip to insert and automation application to insert video over the original source.



CATONE System Architecture is quite simple to deploy and to manage as reported in diagram below:



For general information about the products described in this data sheet, visit: <http://www.media-alliance.it>

Copyright ©2010 Media-Alliance. All Rights Reserved.

Other names and brands may be claimed as the property of others. Information regarding third party products is provided solely for educational purposes. Media-Alliance is not responsible for the performance or support of third party products and does not make any representations or warranties whatsoever regarding quality, reliability, functionality, or compatibility of these devices or products. Media-Alliance reserves the right to alter product offerings and specifications at any time without prior notice. This publication could include technical inaccuracies or typographical errors. References herein to Media-Alliance products and services do not imply that Media-Alliance intends to make them available in other countries. Media-Alliance provides this publication "as is" without warranty of any kind, either express or implied, including, but not limited to, the implied warranties of merchantability or fitness for a particular purpose.